

# POS Color Schemes

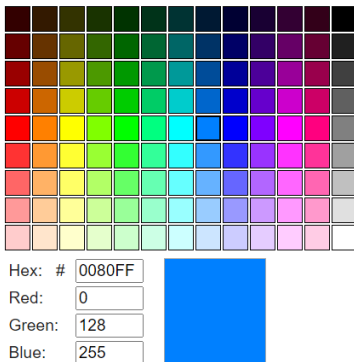
## Introduction

The **POS Color Schemes** feature was added beginning with Edge version 22.0 and was developed to give customers the ability to customize their POS color scheme instead of using the Edge default colors. Choose from the list of included color schemes, or create your own using RGB color values.

## Color Customizing

The Edge now allows POS color customization using the **RGB color system**. RGB stands for **Red, Green, and Blue** respectively with the RGB color system constructing all colors from a combination of the colors red, green, and blue.

When viewing an RGB color chart, you will see a series of **3 integer values** for each of your selected colors. Each integer value you see represents either red, green, and blue. In the example image below, you will see **Red = 0**, **Green = 128**, and **Blue = 255**.



### NOTE

The Edge will **ONLY** recognize RGB values. Hex codes will **NOT** be accepted in place of the RGB value sequence. You **will not** see any color changes to your POS if a Hex code is entered.

## Customizing Colors

You can choose to select from one of the pre-loaded color schemes options, or you may instead choose to create your own by selecting **Custom** from the **POS Color Scheme** drop down menu in **System Options**.

To customize your color scheme in POS:

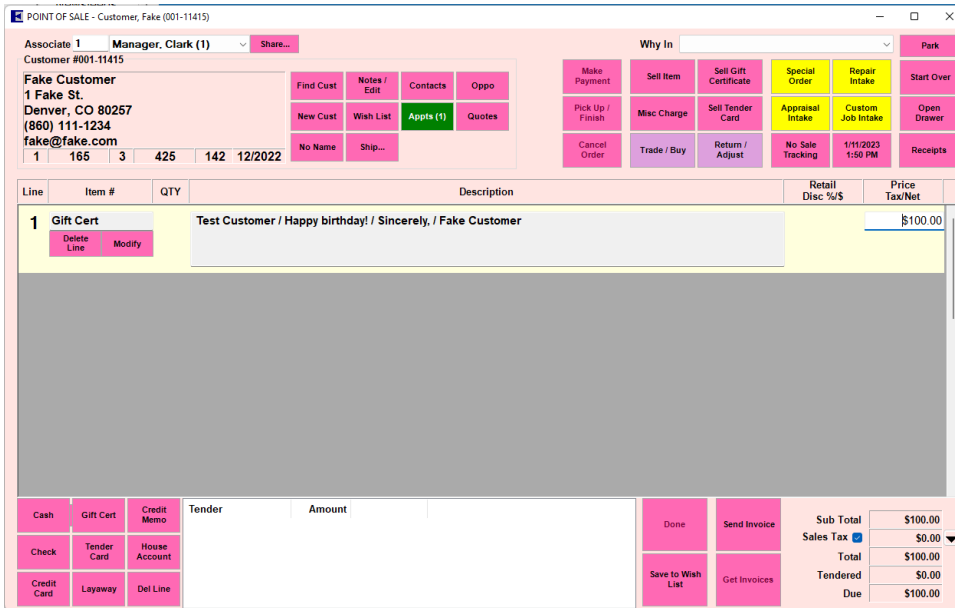
1. Go to **Administrative > System Options**.
2. Scroll down to the section named **POS Options Scheme**.
3. Click **POS Color Scheme** and select **Custom**.
4. Highlight the line that corresponds with the section of POS you are looking to change.

5. Type or copy/paste the 3 RGB numbers into the box, each separated by a comma.

POS Options Scheme	
POS Background	255,228,225
POS Color Scheme	Custom
POS Even Line Color	255,105,180
POS Odd Line Color	221,160,221
POS Service Buttons	255,255,0
POS Tender Buttons	221,160,221
POS The Rest	221,160,221
POS Trade Buttons	221,160,221

6. Click **OK** to save your color choices.

7. Close/reopen POS to apply your changes.



## Pre-Loaded Color Schemes

To select one of the pre-loaded color schemes, you will again scroll down to the **POS Color Scheme** section, but this time you will select any of the options listed that are **not** the **Custom** option:

POS Options Scheme	
POS Background	255,228,225
POS Color Scheme	WhiteBG
POS Even Line Color	None
POS Odd Line Color	Custom
POS Service Buttons	GreenBG
POS Tender Buttons	WhiteBG
POS The Rest	221,160,221
POS Trade Buttons	221,160,221

